

Grasses, Ornamental



Plant Problem	November 21-30	November 11-20	November 1-10	October 21-31	October 11-20	October 1-10	September 21-30	September 11-20	September 1-10	August 21-31	August 11-20	August 1-10	July 21-31	July 11-20	July 1-10	June 21-30	June 11-20	June 1-10	May 21-31	May 11-20	May 1-10	April 21-30	April 11-20	April 1-10	March 21-31	March 11-20	March 1-10	
Grasshopper																												
Powdery Mildew																												
Rust																												

KEY: ■ fruit ■ flower ■ branches ■ leaves ■ trunk ■ crown ■ roots ■ stems

Plant Problem

Signs/Symptoms

Treatment

Grasshopper



Grasshoppers hatch from egg masses deposited in undisturbed soil; perennial grasses are ideal host sites. Nymphs are green to tan and chew ragged holes in leaves. They have large jumping hind legs.

Timing of insecticide applications is critical, and sprays or baits should be applied to areas where young nymphs are found and actively causing damage. Insecticides are less effective on adults and large nymphs. Microbial insecticides are ineffective in Great Plains climates.

Grasses, Ornamental

Plant Problem

Signs/Symptoms

Treatment

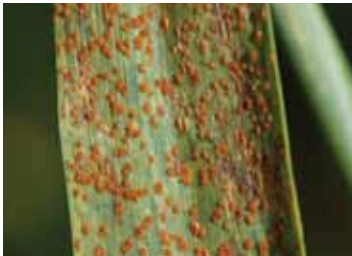
Powdery Mildew



White powdery growth appears mainly on older leaves and the stem. Premature defoliation.

Sanitation. Improve air circulation. Avoid planting in shady areas in the landscape. Apply foliar fungicides at disease onset.

Rust



Bright orange-yellow spore pustules on leaves and stems.

Sanitation. Avoid overhead irrigation. Improve air circulation.